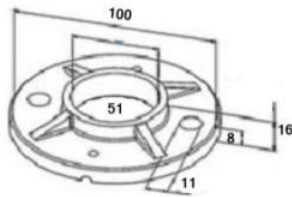
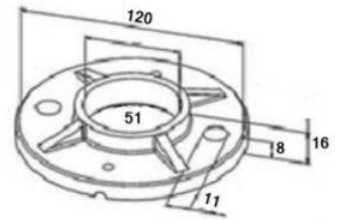


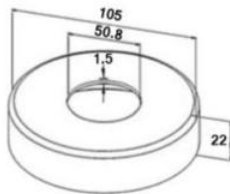
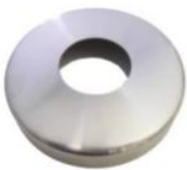
*Test Reports Available Upon Request



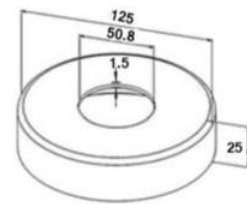
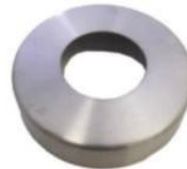
RON1012-50.8 (100mm)
Raw Weldable Base Plate
316



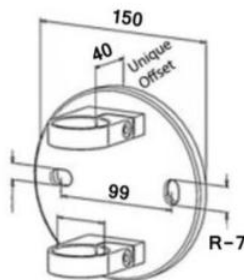
RON1011-50.8 (120mm)
Raw Weldable Base Plate
316



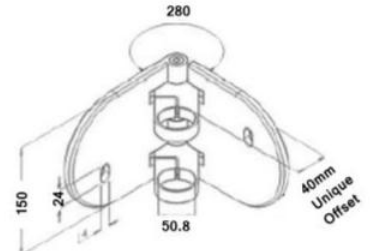
ROS1001-50.8 (105mm)
Cover Plate
316 Satin / Mirror



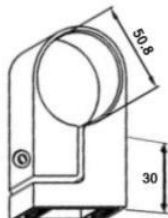
ROS1002-50.8 (125mm)
Cover Plate
316 Satin / Mirror



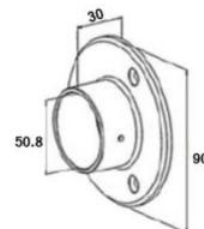
WND1001-50.8
40mm Off-Set Side Fix Bracket
316 Satin



WND1008-50.8
40mm Off-Set Internal / External Corner
316 Satin



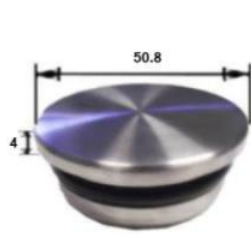
WND1001-CLIP
(Off-Set Different to Complete Unit)
316 Satin



WALLPLATE-50.8
Wall Plate 3 x M6 Fixing Holes
316 Satin / Mirror



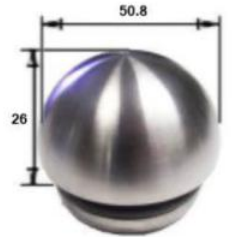
RO1001-50.8
3mm Wall Tube
316 Satin / 316 Mirror



EK1002-50.8
Flat End Cap
316 Satin



EK1010K-50.8
Convex End Cap
316 Satin



EK1018-5.8
Dome End Cap
316 Satin



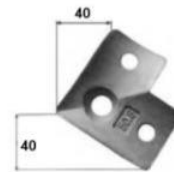
HH1005-50.8
Straight Complete Bung,
Stem, & Saddle
316 Satin



HH1008-50.8
Adjustable Complete Bung,
Stem, & Saddle
316 Satin



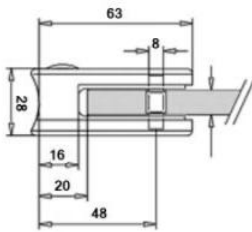
HH1001K-H-50.8
Straight Saddle
316 Satin



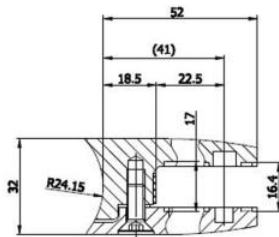
HH1001K-Z-50.8
90 Degree Saddle
316 Satin



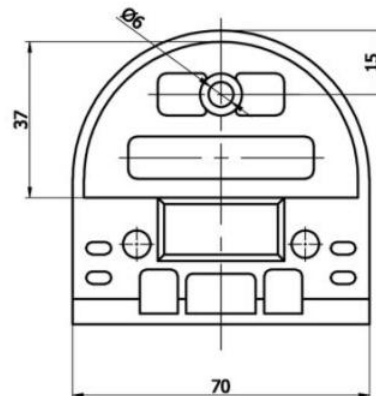
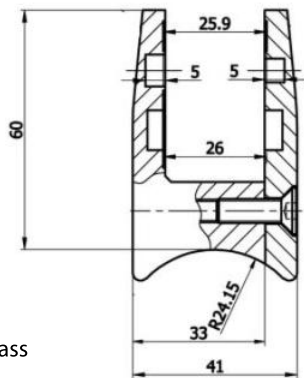
KLH10R-50.8
50.8mm D Shaped Glass Clamp
10mm Glass (Rubbers Also Available for 6, 8, 11.52, & 12mm)
304 Satin / 316 Satin / 316 Mirror

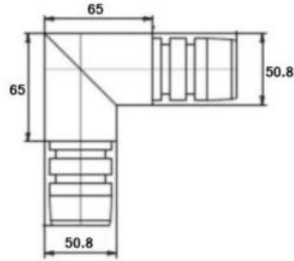


KLH12R-50.8-316
52 x 52mm Square Glass Clamp
10 / 12mm Glass
316 Satin

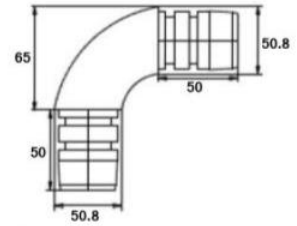


KLH21.5MM-R-316
Suitable for 15, 17.52, 19, and 21.52mm Glass
316 Satin / Mirror

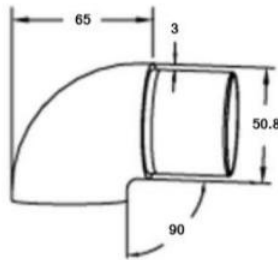




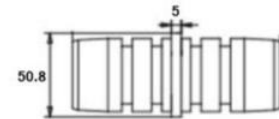
RV1005-50.8
90 Degree Sharp Bend
316 Satin



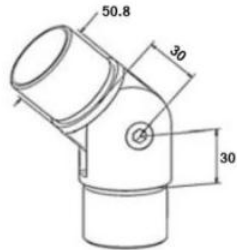
RV1008-50.8
90 Degree Full Radius Bend
316 Satin



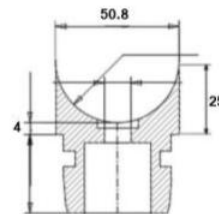
RV1018-50.8
Blank End Scroll
316 Satin



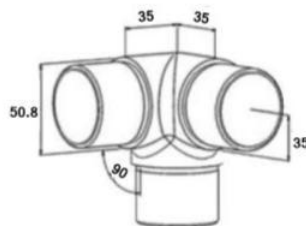
RV1001-50.8
Straight Tube Connector
316 Satin



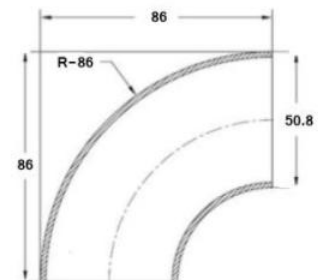
RV1004K-ADJUST-50.8
Adjustable Angle Changer
316 Satin



RA1006-50.8
Adaptor (Aluminium Insert)
316 Satin



EVB1009K-50.8
3 Way Corner Connector
316 Satin



ROB50.8K
Weldable Elbow (2mm Wall)
316 Satin